



徐工徐工 助您成功
XCMG FOR YOUR SUCCESS

XE7000 矿用液压挖掘机

XE7000 MINING HYDRAULIC EXCAVATOR



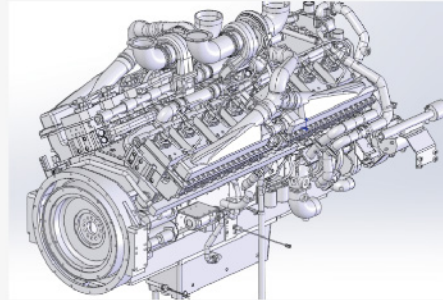
- 铲斗容量 Bucket capacity (m³): 30~36
- 操作重量 Operating weight (kg): 672000
- 额定功率 Rated Power (kW/rpm): 2 x 1193/1800



更节能环保

More energy conservation and environmental protection

康明斯全电控发动机，双涡轮增压技术，具有先进模块化共轨燃油系统（MCRS），超高的喷射压力，动力充足，燃油经济性高，满足各种矿山施工工况；采用CENTRY电子燃油控制系统，可根据来自电子油门和其它设备专用输入信号控制发动机转速和燃油压力，来实现最佳燃油效率；Quantum系统监控发动机各项工作状态，延长使用寿命，降低使用成本。



Cummins full electric-controlled engine, with turbocharged technology and advanced modular common rail fuel system (MCRS) equipped, provides ultra-high injection pressure and plenty of power to improve fuel economy and meet various kinds of working conditions of mine construction. Quantum system monitors each working state of engine, which can prolong the engine's service life and reduce the use cost.

- 基于双动力单元控制系统，满足双动力系统的同步耦合，实现挖掘机功率的最优化使用，在单动力系统出现问题时，智能调整控制逻辑，发挥最大功率。保证单动作及复合动作的协调，针对不同工况，最优化发挥发动机及主泵功率。

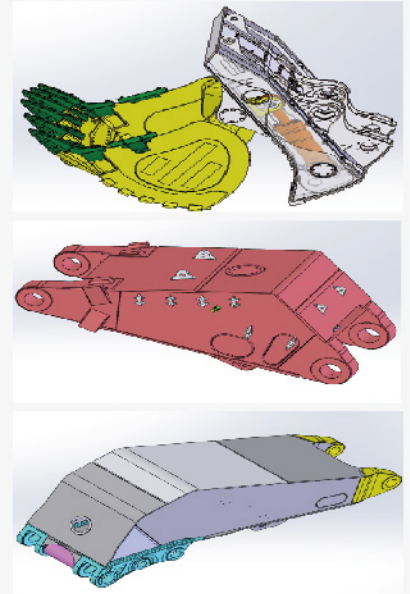
Based on dual power unit control system, synchronous coupling of dual power system, optimal use of excavator power, intelligent adjustment of control logic to maximize power when single power system is in trouble. To ensure the coordination of single action and compound action and to optimize the power of engine and main pump according to different working conditions.

- 独立电控闭式回转系统，保证回转卸荷工况的卸荷高度，同时可在回转制动过程中回收制动能量，实现节能效果；回转泵集成压力切断功能，可在回转系统启动和制动过程中，减少功率损失。

Independent closed type rotating system can guarantee the unloading height on unloading conditions of rotating and meanwhile withdraw rotating brake energy to save more energy consumption.

- 满足矿山的重载型工作装置，关键部位采用高强度耐磨铸钢和特殊的高强度钢材，重载销轴采用全封闭浮动式销轴及自动润滑系统，满足矿山苛刻环境，标配的重载型铲斗配置世界知名公司的合金铸造耐磨岩石型斗齿系统，穿透力强，耐磨性好，更换便捷。

With heavy-duty working device meeting working conditions of mine, key parts adopting high-strength wear-resistant casting steel and special high-strength steel and pins adopting full closed floating type pins and automatic lubrication system, it can meet harsh mine environment. Standard heavy-duty bucket is configured with world famous alloy casting wear-resistant rock teeth system, providing strong penetration, good wear-resistant and quick change.



更高效回报 More efficient return

- 德国制造液压元件和可靠的电控正流量系统，延长了整车使用寿命，提升了工作效率。

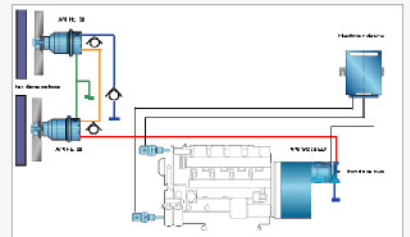
By adopting German-made hydraulic elements and reliable electronic control positive flow system, the service life of whole machine can be prolonged and working efficiency will be improved.

- 具有先进阀外的再生、合流系统，使其具有更大的再生流量、合流流量，极大地降低了能耗，提高了能源利用率。

With advanced out-of-valve regeneration and confluence system, the generation flow and confluence flow is larger, which has greatly reduced the energy consumption and improved energy utilization.

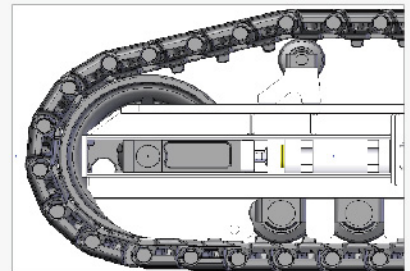
- 先进独立温控散热系统，可以根据油温自动控制风量，节能降噪，进口管带式散热提高了散热效率。

Advanced independent temperature control cooling system can automatically control air volume according to oil temperature, save energy and reduce noise. Imported corrugated tube type cooling will improve the cooling efficiency.



- 先进的自补油、自适应底盘张紧系统，极大地降低行走时矿区路面的冲击，提高操作舒适性，延长整机结构件寿命。

Advanced hydraulic chassis tension system can greatly reduce the impact on road surface of mine area during travel, improve operation comfort and prolong service life of structural parts of whole machine.



更智能管控

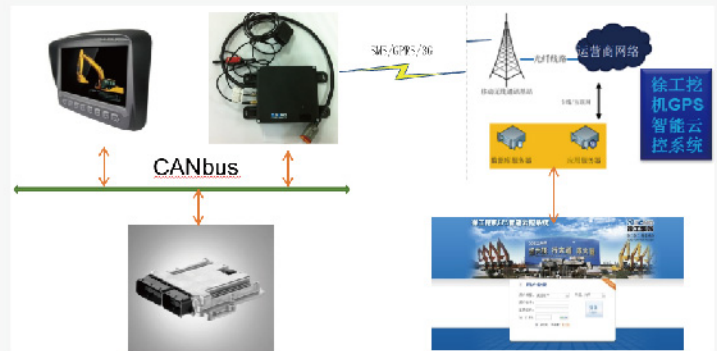
More intelligent management and control

- 采用全新自主开发的智能控制系统（XEICS），实现了动力系统与液压系统功率的精确匹配，工作更加高效节能。

Adopt brand new intelligent control system developed independently to achieve accurate power match between power system and hydraulic system, the work is more efficient and energy efficient.

- 徐工矿机GPS智能云控制系统，与公司CRM、400、DMS系统链接，集GPS定位功能、远程管理和远程诊断功能。能够承载挖掘机地理位置信息，挖机现场工作参数和报警信息数据上传，实现车辆出入库管理、远程管理、远程诊断、远程控制。

XCMG Excavator GPS intelligent cloud control system, which is linked with company's CRM, 400 and DMS system, integrates GPS positioning function, remote management and remote diagnosis function into one. With information about excavator's location, working parameters of excavator on site and alarm information uploading, entry and out warehouse management, remote management, remote diagnosis and remote control can be achieved.



- 设备关键系统配置了多种信号采集设备，实时检测设备，对工况进行监控，出现异常时会发出报警，便于故障诊断和远程监测。

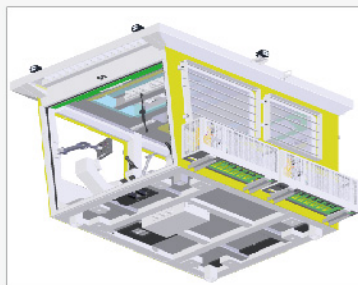
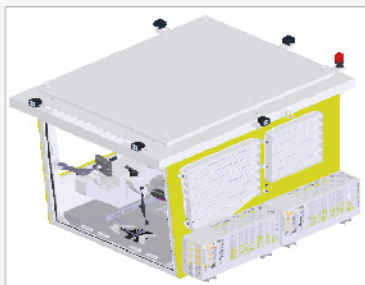
Key system of equipment is configured with various kinds of signal acquisition devices to test the equipment in real time and monitor the working conditions, and if there is something abnormal, it will send out alarm, which is convenient for fault diagnosis and remote monitoring.

更安全舒适

More safe and comfortable

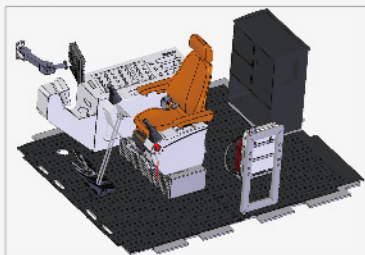
- 配备超大型、全视野、双座椅，具有FOPS功能的安全可靠的专用驾驶室，操作布局合理、可靠、布局紧凑，节省空间，全自动、大功率的冷暖空调系统；多点支撑的减震器能有效的减震降噪，可为驾驶员提供舒适、宽敞的工作环境，较少驾驶员的操作疲劳。

Special cab featured with ultra large space, full field of view, double seats and FOPS function is safe and reliable. Operation arrangement is reasonable and reliable. Compact layout can save much space. Cooling and heating air conditioning system with large power is fully automatic. Shock absorber with multipoint supporting can effectively reduce vibration and noise, providing operator with comfortable and capacious working environment and reduce the operation fatigue of operators.

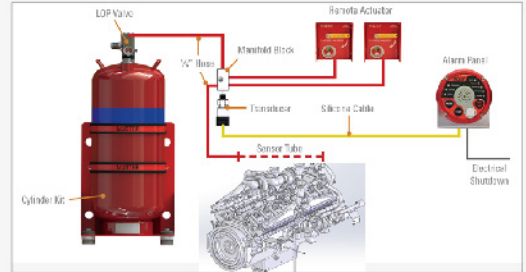


- 大屏幕显示器，多点视频监控，消除视野盲区，施工更加安全。

Large screen display and multipoint video monitor can eliminate blind area and make the construction safer.



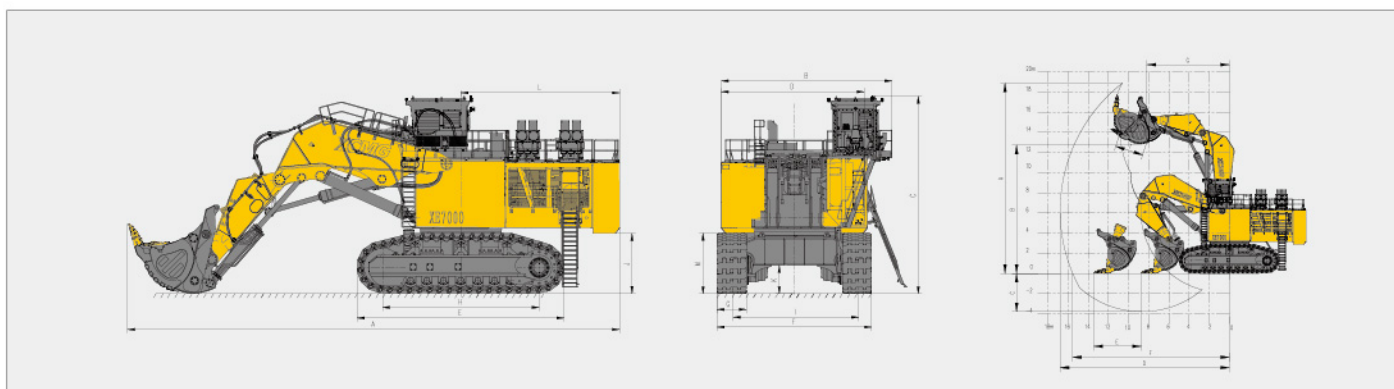
- 配备Muster II 自动灭火系统，动力舱、泵室等全方位保护，保证设备使用安全。
Adopt Muster II fire suppression system to protect the power compartment and pump room in full directions, which can thus guarantee the safe operation.



便捷的维护保养 Convenient maintenance

- 各部件之间均有通道相连，维护保养触手可及。
There are all channels between each part, which makes the maintenance within reach.
- 整机采用全自动单线式集中润滑系统，能精确控制每个润滑点的润滑脂量和润滑间隔，确保有效润滑。
The whole machine adopts full automatic single-line centralized lubrication system to control grease amount and lubrication interval of each lubrication point accurately and ensure effective lubrication.
- 采用快速加注系统，实现了整车的地面集中保养，提升保养效率，降低保养劳动强度。
Adopt fast-fill system to achieve centralized maintenance of whole machine on ground, improve the maintenance efficiency and reduce maintenance labor intensity.





主要参数 / Main Specifications

型号 Model	单位 UOM	参数 Parameters
操作重量 Operation Weight	Kg	672000
铲斗容量 Bucket Capacity	m³	30-36
发动机 Engine		
发动机型号 Model	/	QSK50-C1600
直喷 Direct injection	/	✓
4冲程 Four strokes	/	✓
水冷 Water cooling	/	✓
涡轮增压 Turbo-charging	/	✓
低温中冷 LTA	/	✓
缸数 No. of cylinders	/	16
额定输出功率/转速 Output power	kw/rpm	2 × 1193/1800
最大扭矩/转速 Torque/Speed	N.m	2 × 6835/1500
排量 Displacement	L	2 × 50.3
主要性能 Main performance		
行驶速度(高/低) Travel speed (H/L)	km/h	1.5
回转速度 Rotating speed	r/min	3.5
爬坡能力 Gradeability	°	17°
接地比压 Ground pressure	kPa	276
铲斗挖掘力 Bucket digging force	kN	2270
斗杆挖掘力 Arm crowd force	kN	1830
最大牵引力 Maximum traction	kN	2315
液压系统 Hydraulic system		
主泵 Main pump	/	8个柱塞泵 Plunger pumps
主泵额定流量 Rated flow of main pump	L/min	8 × 760
主安全阀压力 Pressure of prime valve	MPa	32
行走系统压力 Pressure of travel system	MPa	27
回转系统压力 Pressure of swing system	MPa	35
先导系统压力 Pressure of pilot system	MPa	5.5
油类容量 Oil capacity		
燃油箱容量 Fuel tank capacity	L	13000
液压油箱容量 Hydraulic tank capacity	L	6000
发动机油容量 Engine oil capacity	L	2 × 161

型号 Model	单位 UOM	参数 Parameters
外形尺寸 Outline dimension		
A 总长 Overall length	mm	23500
B 总宽 Overall width	mm	9090
C 总高 Overall height	mm	9440
D 转台宽度 Width of platform	mm	7000
E 履带长度 Length of crawler	mm	10000
F 底盘总宽 Overall width of chassis	mm	7400
G 标准履带板宽度 Width of crawler	mm	1400
H 履带轴距 Track length on ground	mm	7500
I 轨距 Crawler gauge	mm	6000
J 配重离地间隙 Clearance under counterweight	mm	2885
K 最低离地间隙 Min. ground clearance	mm	1360
L 尾部回转半径 Min. tail swing radius	mm	7930
M 履带高度 Height of crawler	mm	2900
作业范围 Working scope		
A 最大挖掘高度 Max. digging height	mm	18700
B 最大卸载高度 Max. dumping height	mm	12900
C 最大挖掘深度 Max. digging depth	mm	3800
D 8英尺水平面挖掘深度 8-inch horizontal plane digging depth	mm	/
E 最大垂直挖掘深度 Max. vertical wall digging depth	mm	/
F 最大挖掘半径 Max. digging reach	mm	16700
G 最小回转半径 Min. swing radius	mm	9250
标配 Standard		
动臂长度 Length of boom	mm	8000
斗杆长度 Length of arm	mm	5000
铲斗容量 Bucket capacity	m³	34
选配 Option		
反铲铲斗容量 Backhoe capacity	m³	36

材料和规格可随时改变，恕不另行通知
Materials and specifications may be changed at any time without prior notice



CAMC VIAL
Ruta 40 y Calle 7, SAN JUAN - ARGENTINA

FAX
(+54-264) 4262275

ARGENTINA
+54-2644998650

info@camcvial.com.ar



XCMG202001

WWW.CAMCVIAL.COM.AR