



徐工徐工 助您成功  
XCMG FOR YOUR SUCCESS

# XE1250/1250G 矿用挖掘机

## XE1250/1250G MINING HYDRAULIC EXCAVATOR



- 铲斗容量 Bucket Capacity ( m<sup>3</sup> ) : 5.2-8.5
- 操作重量 Operation Weight ( kg ) : 115000
- 额定功率 Output power ( kW/rpm ) : 567/1800



WWW.CAMCVIAL.COM.AR

## More energy-conservation and environmental protection



Imported Cummins engine with original packing has features of powerful force and high efficiency. Low noise and low emission can greatly reduce the pollution to the environment. Compared with other brands of the same level, it has greater digging force, rotary force, rotary force and traction force, which can ensure that the machine can work quickly and efficiently. It can meet all the application requirements. Blending with proven, sturdy and durable parts and delicate manufacturing process, higher reliability and efficiency can be achieved. The QSK23 T4F engine adopted by the XE1250G is more environmentally friendly and can meet the North American Tier 4F and European Stage V emission standards.

## More efficient return

Imported hydraulic system of international famous brands is matched with high-quality hydraulic elements perfectly; high-efficient and energy-saving high-end configurations ensure the good quality of the product.

By use of mature and reliable negative flow control system, the flow distribution is provided by multi-port valve to all acting cylinders through the three pump converging, whereby the powerful digging ability and excellent working performance are maintained.



- 燃油双级过滤，初级为金属滤芯，可重复利用。  
Fuel dual-level filtration, and the primary is a metal filter, which can be reused.

- High quality integrated electric system, with higher indicator and electric centralized control, the design is more concise and the system is more reliable.

- The original aluminum radiator of international famous brands with optimal matching has better cooling effect and meets the requirements of working for much longer time. Independent cooling system can guarantee the reliability of the machine.



## More reliable and durable

- With boom and arm reinforced and key parts adopted with integration steel casting. Through structural optimization, stress concentration is reduced to ensure equipment reliability under severe conditions.



- 标配重载岩石型铲斗，采用高强度钢板，切削部位加强设计，坚实耐磨，大大提高使用寿命。

Standard heavy-load rock bucket, adopting the high strength steel and with cutting parts reinforced, is sturdy and durable enough to prolong the service life greatly.



- 轴套采用先进工艺制造，大大提高强度及耐磨性，销轴采用强化处理，增加其抗疲劳能力。

Axle sleeve adopts advanced technology to greatly improve the strength and durability. The pin roll adopts the reinforced treatment to improve its anti-fatigue ability.

- 

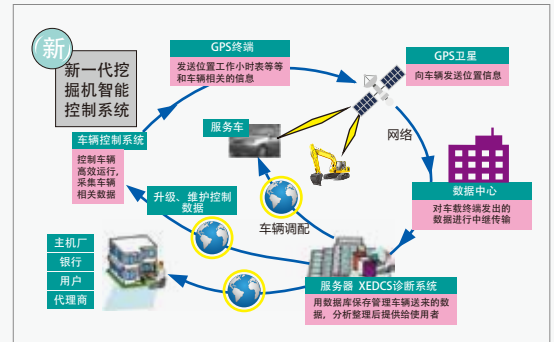
Reinforced chassis device featured with high strength and low gravity guarantees better work stability; cooperating with integral heavy type rail clamping device can get better protective effect and longer service life.



## More intelligent management and control

- 先进的XEICS徐工挖机智能管理系统，采用CAN总线通讯和物联网技术，集主控制系统、发动机ECM、监控系统、操控面板、GPS云控系统和现场诊断系统，实现机器信息数字化共享，提高产品智能化水平。便捷的手机APP微服务，随时随地掌握挖机的位置、作业状况、工作时间、燃油消耗、保养周期。

Advanced XEICS XCMG excavator intelligent management system adopts the CAN bus communication and technology of Internet of Things, which can integrate the main control system, engine ECM, monitor system, control panel, GPS cloud control system and on-site diagnosis system and thus achieve the digital share of machine data, improve the intelligent level of product. With convenient micro service of mobile phone APP, information of location, operation conditions, working hours, fuel consumption and maintenance period can be known at any time and any place.



With convenient micro service of mobile phone APP, information of location, operation conditions, working hours, fuel consumption and maintenance period can be known at any time and any place.

The control system can automatically adjust the output power of the main pump according to user settings. When the vehicle is working in high altitude areas and the engine power drops, the user can adjust the output power ratio of the main pump to match the main pump with the engine.

Equipped with an automatic centralized lubrication system (except the bucket), which automatically fills grease to reduce manual costs.

## More comfortable and safe

- 大视野全新驾驶室，噪音更低，操作环境更舒适。顶部采用FOPS护罩，玻璃采用夹胶玻璃，提高操作者的安全性。

Brand-new cab with large view, the noise will be reduced, the operating environment is more comfortable. FOPS shield is adopted for the top of cab and laminated glass is adopted for glass to improve the safety of operator.

- 大功率空调，制冷效果更好。集成化控制面板，操控更舒适。

Air-conditioner has better cooling effect. With integrated control panel, the operation is more comfortable.



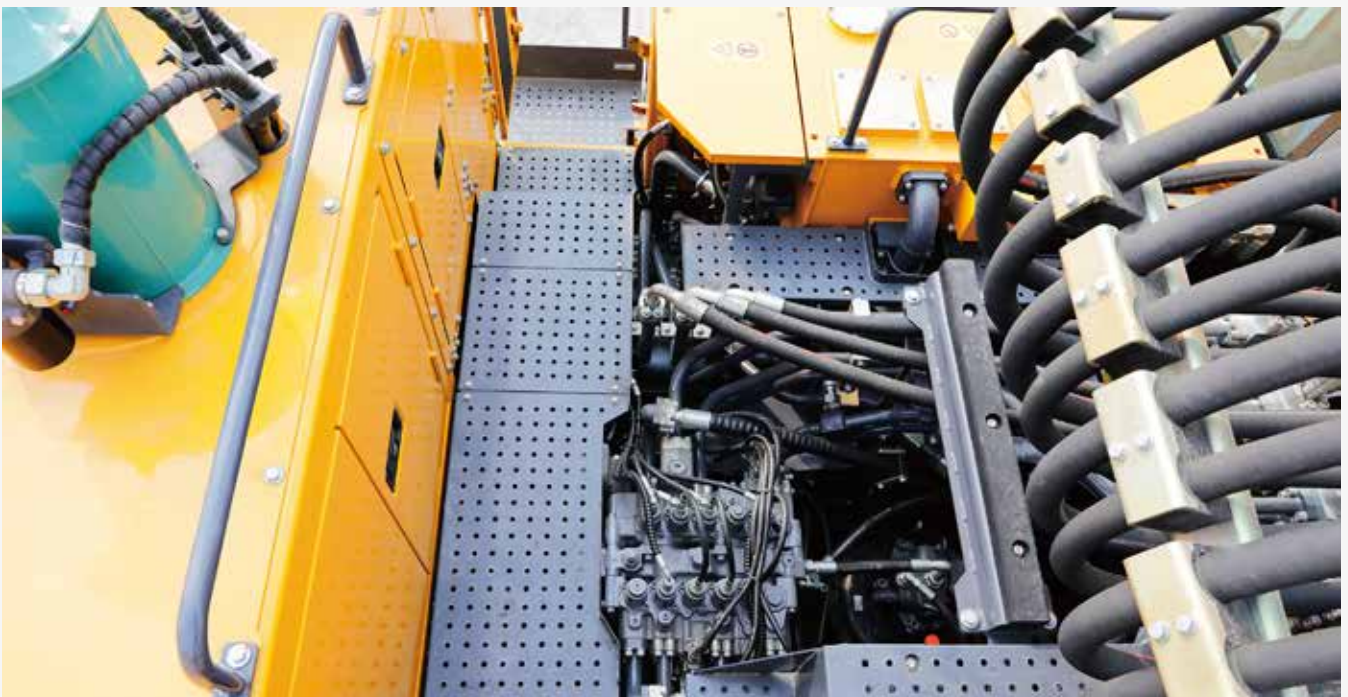
- 

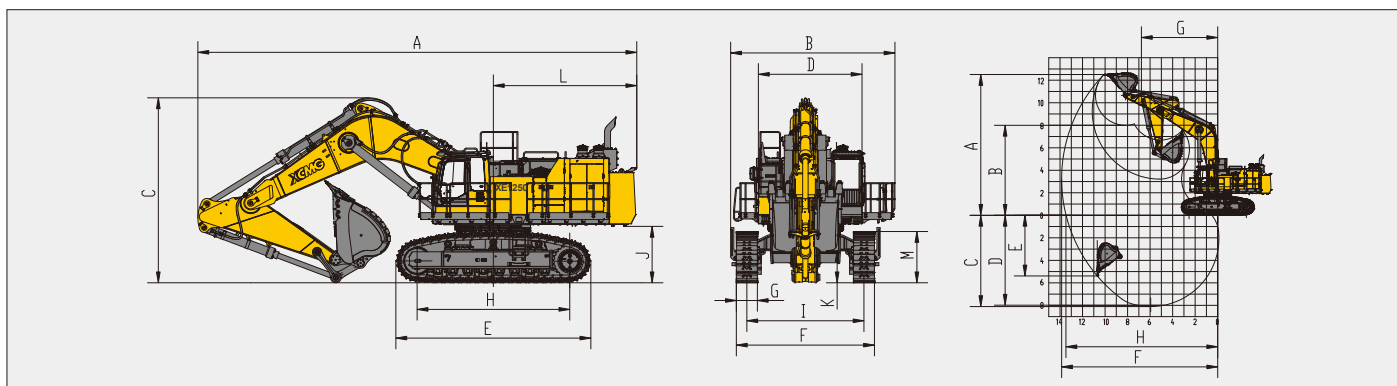
Luxury suspension seat with original packing is designed on the basis of ergonomics concept, making each operation easy to be done and controlled and the operation more comfort.



## Convenient repair and maintenance

- 设计中部检修通道，维护检修更方便。  
Central maintenance passage is designed to make the repair and maintenance more convenient.
- Individual pump chamber and engine compartment is designed to make the repair and maintenance more convenient.
- Protective guard and extinguisher can be installed optionally to prevent the occurrence of safety accident.
- Optional fast fuel filling system to facilitate fuel filling.





## 主要参数 / Main Specifications

型号 Model	单位 UOM	参数 Parameters
操作重量 Operation Weight	Kg	115000
铲斗容量 Bucket Capacity	m <sup>3</sup>	5.2-8.5

发动机 Engine		
发动机型号 Model	/	QSK23/QSK23T4F
直喷 Direct injection	/	√
4冲程 Four strokes	/	√
水冷 Water cooling	/	√
涡轮增压 Turbo-charging	/	√
空空中冷 Air to air intercooler	/	√
缸数 No. of cylinders	/	6
额定输出功率/转速 Output power	kw/rpm	567/1800
最大扭矩/转速 Torque/Speed	N.m	3468/1350
排量 Displacement	L	23.15

主要性能 Main performance		
行驶速度(高/低) Travel speed (H/L)	km/h	3.5/2.4
回转速度 Rotating speed	r/min	5.2
爬坡能力 Gradeability	°	30
接地比压 Ground pressure	kPa	143
铲斗挖掘力 Bucket digging force	kN	597
斗杆挖掘力 Arm crowd force	kN	470
最大牵引力 Maximum traction	kN	746

液压系统 Hydraulic system		
主泵 Main pump	/	3个柱塞泵 Plunger Pumps
主泵额定流量 Rated flow of main pump	L/min	3 × 531
主安全阀压力 Pressure of prime valve	MPa	34.3
行走系统压力 Pressure of travel system	MPa	34.3
回转系统压力 Pressure of swing system	MPa	28
先导系统压力 Pressure of pilot system	MPa	3.9

油类容量 Oil capacity		
燃油箱容量 Fuel tank capacity	L	1460
液压油箱容量 Hydraulic tank capacity	L	640
发动机油容量 Engine oil capacity	L	75/95

型号 Model	单位 UOM	参数 Parameters
外形尺寸 Outline dimension		
A 总长 Overall length	mm	14610
B 总宽 Overall width	mm	5470
C 总高 Overall height	mm	6160
D 转台宽度 Width of platform	mm	3450
E 履带长度 Length of crawler	mm	6500
F 底盘总宽 Overall width of chassis	mm	4600
G 标准履带板宽度 Width of crawler	mm	700
H 履带轴距 Track length on ground	mm	5090
I 轨距 Crawler gauge	mm	3900
J 配重离地间隙 Clearance under counterweight	mm	1880
K 最低离地间隙 Min. ground clearance	mm	1070
L 尾部回转半径 Min. tail swing radius	mm	4850
M 履带高度 Height of crawler	mm	1710

作业范围 Working scope		
A 最大挖掘高度 Max. digging height	mm	12500
B 最大卸载高度 Max. dumping height	mm	7990
C 最大挖掘深度 Max. digging depth	mm	8110
D 8英尺水平面挖掘深度 8-inch horizontal plane digging depth	mm	7980
E 最大垂直挖掘深度 Max. vertical wall digging depth	mm	5390
F 最大挖掘半径 Max. digging reach	mm	13860
G 最小回转半径 Min. swing radius	mm	6770
H 最大地面挖掘半径 Max. ground digging reach	mm	13470

标配 Standard		
动臂长度 Length of boom	mm	7550
斗杆长度 Length of arm	mm	3400
铲斗斗容 Bucket capacity	m <sup>3</sup>	7

选配 Option		
动臂长度 Length of boom	mm	9000
斗杆长度 Length of arm	mm	3600
铲斗斗容 Bucket capacity	m <sup>3</sup>	5.2(岩石Rock) 6.0(岩石Rock) 7.7(土方Sol) 8.5(土方Sol)

材料和规格可随时间改变，恕不另行通知  
Materials and specifications may be changed at any time without prior notice

**徐州徐工矿业机械有限公司**  
XUZHOU XCMG MINING MACHINERY CO.,LTD

WWW.CAMCVIAL.COM.AR



**CAMC VIAL**

Ruta 40 y Calle 7, SAN JUAN - ARGENTINA



(+54-264) 4262275



ARGENTINA

+54-2644998650



info@camcvial.com.ar

WWW.CAMCVIAL.COM.AR