



All Rights Reserved

Materials and specifications are subject to change without notice.
Featured machines in photos may include additional equipment.
See your XCMG dealer for available options.



CAMC VIAL

DIRECCION: RUTA 40, CALLE 7 - SAN JUAN, ARGENTINA
TEL: +54 - 2644998650
EMAIL: info@camcvial.com.ar
SITE: <http://www.camcvial.com.ar>

XUZHOU CONSTRUCTION MACHINERY GROUP IMP. & EXP. CO., LTD

Add: No.1, Tuolanshan Road, Xuzhou Economic Developing Zone, Jiangsu, China 221004



XE400DK

Hydraulic Excavator



Advanced Configuration

Ecological and economical

- ▶ Cummins engine with low fuel consumption, low emission can provide strong power
- ▶ High pressure common rail system improve combustion efficiency
- ▶ With optimized engine power curves and low speed large torque output

Multiple applications

- ▶ Different boom and bucket combinations maximize utilization of different conditions
- ▶ Multi-functional machine system meets various job requirements such as digging and crushing

Comfortable operational experience

- ▶ Air Conditioner and Heater and multi-channel stereo air input system ensure the appropriate temperature
- ▶ Equipped with advanced audio system
- ▶ The cab equipped with hydraulic shock absorbers has multi-directional and multi-level adjustment functions

Excellent after-sales service

- ▶ Global after-sales service system and quick response mechanism
- ▶ Real-time technical consultation and maintenance

Convenient maintenance

- ▶ Easy maintenance design concept makes your maintenance done without dead angle
- ▶ Daily maintenance points are within your reach

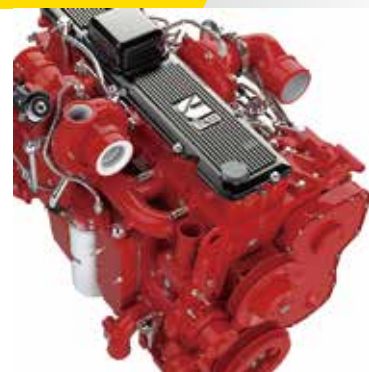
Safe and durable

- ▶ Upgraded undercarriage structure improves load bearing performance
- ▶ Strengthened key stress-bearing parts of chain links
- ▶ Strengthened and wear-resistant bucket is more durable



Ecological And Economical

- ▶ With Cummins imported electronic fuel injection engine adopted, the machine has stronger power and higher fuel economy.
- ▶ High pressure common rail system realizes optimum fuel injection control so as to effectively improve combustion efficiency.
- ▶ A new generation of intelligent electronic control system, which integrates intelligence, environmental protection and safety, to achieve the balance of power and hydraulic load; Intelligent electronic control can achieve remote control, with new memory function, the operation process will be recorded at any time, and power conversion device will optimize power use.
- ▶ With optimized engine power curves and low speed large torque output, the fuel consumption is greatly reduced while providing strong power, which satisfies dynamic balance and economy of power output and fuel consumption in heavy-load mode.
- ▶ Efficient positive flow control system has features of high reliability, less pressure loss, high flow distribution efficiency and smooth compound movements, energy conservation, efficiency, controllability and other aspects are greatly improved.
- ▶ Brand new positive flow branch pump independently controls main pump, which optimizes speed sensing and load self-adaptive control, realizes on-demand, effectively reduces neutral position return loss, the respond speed is faster.



Comfortable And Safe

Driver's cab

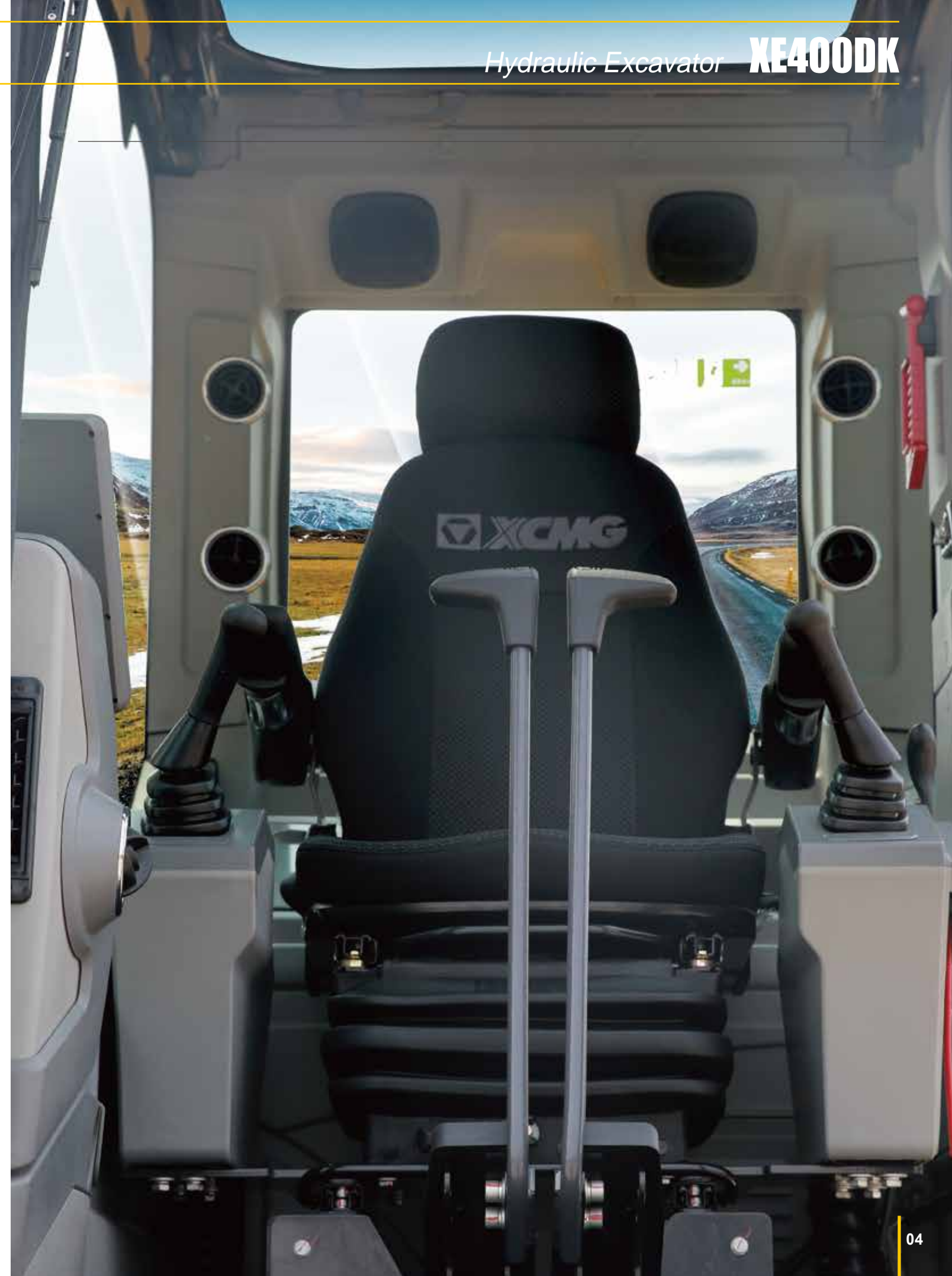
- ▶ With high strength pillar with irregular shape adopted, the rigidity of driver's cab is greatly improved and safety is guaranteed.
- ▶ Anti-rolling cab is equipped, top protection, front protection and side protection can be installed to meet the requirements of falling objects so as to further improve safety of the cab.

Wide field of vision

- ▶ The panoramic sunroof design brings wider field of vision. Centralized arrangement of the buttons makes driving experience be overall upgraded.

Trim arrangement

- ▶ Brand new interior design, commonly used electrical switches and spare switches are integrated in the right side interior trims, centralized location brings easy operation.
- ▶ The mounting holes for low temperature start, quick change and other expansion function are reserved.
- ▶ Brand new electronic air conditioning system provides strong refrigerating and heating capability, and the automatic adjustment thermostat of air conditioner provides the comfortable temperature that is the most suitable for human body.



Comfortable damping

- ▶ Damping spring is added inside high performance silicone oil shock absorber, which can effectively isolates the shock wave in specific frequency band and improves comfort.



Reliable And Durable

- ▶ Lengthened and widened heavy-load carrier combined with reinforced exclusive working devices for mines bring better stability and higher reliability, which can satisfy heavy-load construction in various working modes.
- ▶ Exclusive double ribbed track for mines with enlarged plate thickness and track tooth height has better abrasive resistance and long service life.
- ▶ Reinforced mine type working devices combined with high pressure system design ensure the whole machine have the strongest digging force among the machines of same level so as to handle with various working modes easily.
- ▶ The standard oil-bath air filter satisfies the demand for cleaning of air inlet system in heavy dust working mode so that the replacement period of air inlet filter element is prolonged. It provides better protection for engine, prolongs engine service life and greatly reduces maintenance and usage cost of users.
- ▶ Oil return filter is equipped to sufficiently filtrate the dust in hydraulic oil so that the hydraulic system is kept clean.
- ▶ The accumulator is added to absorb pressure fluctuation so that high reliability of system and pipelines is ensured.



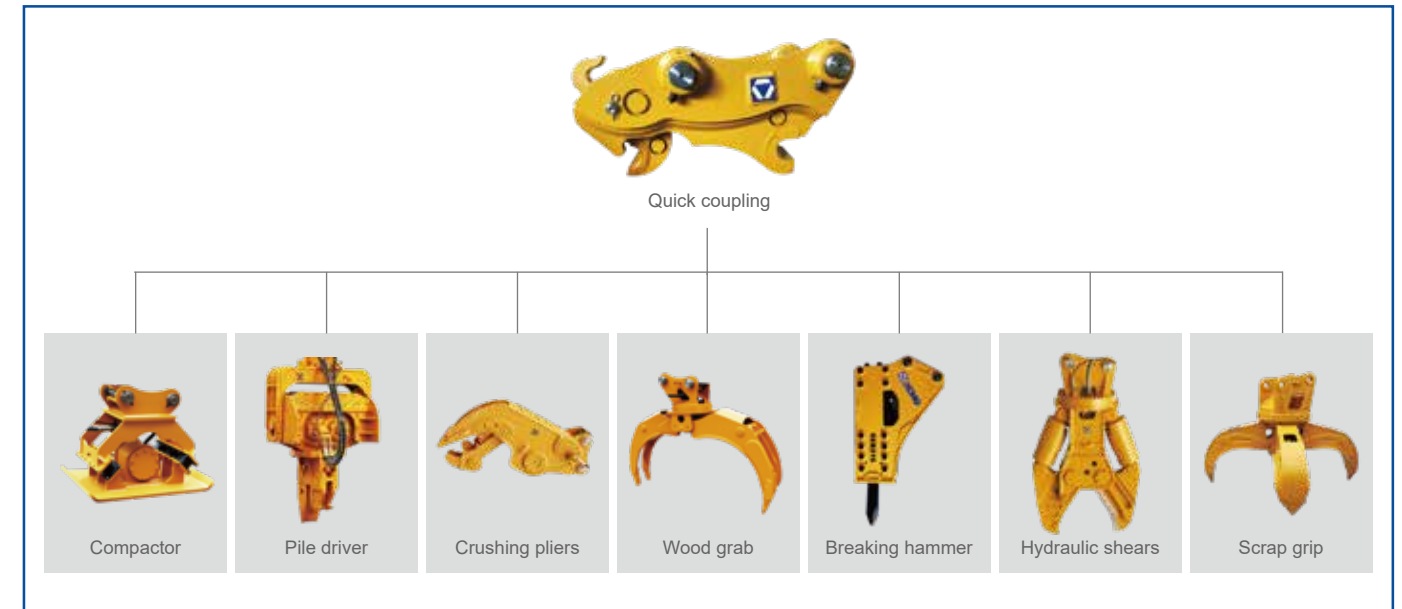
Intelligent Control

- ▶ The intelligent electronic control system can achieve integrated control for engine speed and input power of hydraulic pump, meanwhile remote fault monitoring and self-diagnostic function is available.
- ▶ The remote control platform is completed, and functions including remote fault diagnosis, remote setting of host operating parameters, remote monitoring of working status, automatic prompting of maintenance information and other functions are improved.
- ▶ New generation 8-inch color touch screen display brings more detailed menu layout, clearer screen displaying and more friendly human-computer interface, and video displaying function is reserved and various video formats can be supported.



Multiple Application Conditions

- ▶ The independently developed multi-functional intelligent work tool control system can realize crushing, shearing, cleaning, compacting, milling, transporting, pinching, grasping, scraping, loosening, lifting, and other operations, and can truly integrate multiple operations into one machine.
- ▶ Different boom and bucket combinations can adapt to various working conditions



Maintenance And Service

- ▶ Daily maintenance points are within your reach: Whether it is fuel filter, oil filter, pilot filter, you can directly service it on the ground, the operation is easy and cost saving.
- ▶ The fuel pre-filter and the oil-water separator become one. Automatic alarm device is equipped in oil-water separator to remind the user for water draining in time. The maintenance and service are more convenient, time-saving and worry-saving.
- ▶ A wide range of after-sales service system, quick-response rescue mechanism can ensure that you use at ease



This is a kind of king model which can be used in mine operation, municipal construction, highway and bridge construction, ditches and irrigation and water conservancy construction and so on. High pressure common rail system realizes optimum fuel injection control and effectively improves combustion efficiency. Intelligent electronic control system can realize the comprehensive control of engine speed and hydraulic pump input power, and has the function of fault monitoring and diagnosis. Enhanced working device, with high pressure system design to ensure that the whole machine has the same level of the most powerful digging force, can easily respond to various working conditions.



Standard Configuration

	Name of equipment	XE400DK
Engine	Engine model	
	Emission level	
	Automatic preheating	
	Oil-water separator with water level indication sensor	
	Radial seal air cleaner	
	Air prefilter	
	50°C high temperature ambient cooling assembly	
	Radiator dust screen	
	Fuel marker	
	Oil-water quick release device	
	Fuel breather valve	
	Air pressure difference indicator	
	Automatic idle speed	
	Boom/arm flow regeneration	
	Auxiliary hydraulic valve	
Hydraulic system	Reverse rotation damping valve	
	Automatic rotation parking brake	
	Hydraulic buffer valve	
	Straight hydraulic circuit	
	Boom priority valve	
	Rotary logic valve	
	Hydraulic oil ISO VG 46	
Cab and interior trim	Rotary anti-sway valve	
	Gauge pressure monitoring	
	Pressurized cab	
	Fully adjustable mechanical suspension seat	

	Adjustable seat armrest
	Seat belt (51 mm [2 "] wide)
	Openable windscreen with auxiliary device
	Front windshield divided by 70/30 ratio
	Double laminated windshield and other toughened windows
	Sliding door upper window
	Bi-directional air outlet air conditioner with defroster (automatic type) (pressurization function)
	Color liquid crystal display capable of displaying warning information, filter / liquid replacement information and working hours
	Control handle
	Travel control pedal with detachable manual control lever
Cab and interior trim	Two stereo speakers
	Beverage cup holder
	Coat and hat hook
	Cleanable floor mat
	Air conditioning system
	High and low gears shift
	One-key boost mode
	Top sunroof
	Intermittent multi-gear wiper
	Cup holder/envelope
Safety and security configuration	Cold and warm storage box
	Radio receiver
	Driving door locks and cabin locks
	Alarm horn
	Isolation plate between engine and oil pump chamber
	Engine Emergency Stop Switch
	Rear window emergency exit
	Battery circuit breaker

Safety and security configuration	Boom and arm retaining valve
	Overheat alarm
	Safety handrails and pedals
	Anti-skid plate/anti-skid paste
	Hydraulic safety locking lever
	Emergency escape hammer
Chassis system and shield	Left and right rearview mirrors
	Track single rail protector
	Bottom frame traction ring
	600 mm (24 ") three-rib track shoe
Protective device kit: chassis bottom sealing plate, walking motor sealing plate	
Working device	Boom
	Arm 2.67 m
	Bucket 2.1M3 Strengthening Bucke
Electrical system	Battery (2× 850CCA)
	70A alternator
	7.8 kW starting motor
	24V cigarette lighter
Lighting lamp	Right and left boom work lights
	Right working light installed on storage box
Counterweight	Cab interior lighting
	7.2 t counterweight
Technology	XEICS intelligent control system
	Data link socket

Optional Configuration		
Name of equipment		XE400DK
Engine	Oil-water separator with heater (24V)	
	Oil bath type air prefilter	
	Coolant heater (fuel type)	
	Electronically controlled silicone oil clutch	
	Fuel filling pump 50L / min	
	Rapid fuel filling system	
Hydraulic system	Hydraulic pipeline: breaking hammer and thumb clamp	
	Operation mode switching	
	Hydraulic oil ISO VG 32, 68	
Cab and interior trim	Spare valve plate	
	Air suspension seat with cushion heating	
	Retractable seat belt (51 mm [2 "] wide)	
	Vehicle mounted oxygen supply device	
	Fire extinguisher	
	Reserve switch for working aids	
Safety and security configuration	Electric sunshade curtain	
	Explosion-proof valve for boom and arm pipeline	
	Rotary alarm lamp	
	Counterweight rearview mirror	
	Roll over protection structure (ROPS)	
	Falling object protection structure (FOPS)	
Chassis system and shield	230 mm (24 ") double-rib track shoe	
	700 mm (28 ") three-rib track shoe	
	800 mm (31 ") double-rib track shoe	
	600 mm (24 ") three-rib track shoe	

Chassis system and shield	600 mm (24 ") three-rib track shoe
	800 mm (31 ") three-rib track shoe
	Extended chassis
	Track rubber block
	Track double rail protector
Working device	Full-length track guard (two-piece, lower frame needs to be replaced)
	Boom
	Arm 2.67/2.9 m
	Arm 3.2 m
	2.1m3 rock bucket
	2.2m3 Strengthening Bucket
	2.5m3 earthwork bucket
	Quick connector
	Breaking hammer
	Hydraulic thumb pliers
	Scarifier
	Vibrating tamper
	Hydraulic shear
	Grab tool
	High frequency crusher
	Shell bucket
	Plum grab bucket
	Screen bucket
Electrical system	Pipe grabbing machine
	Walking alarm
	12V cigarette lighter
	Camera
	5V USB interface

Electrical system	12V power interface
Lighting lamp	Front working light installed on cab top
	Rear working light installed on cab top
Counterweight	200 kg auxiliary counterweight (optional 2 pieces)
Lubrication system	Electric self-lubricating system
	Arm concentration

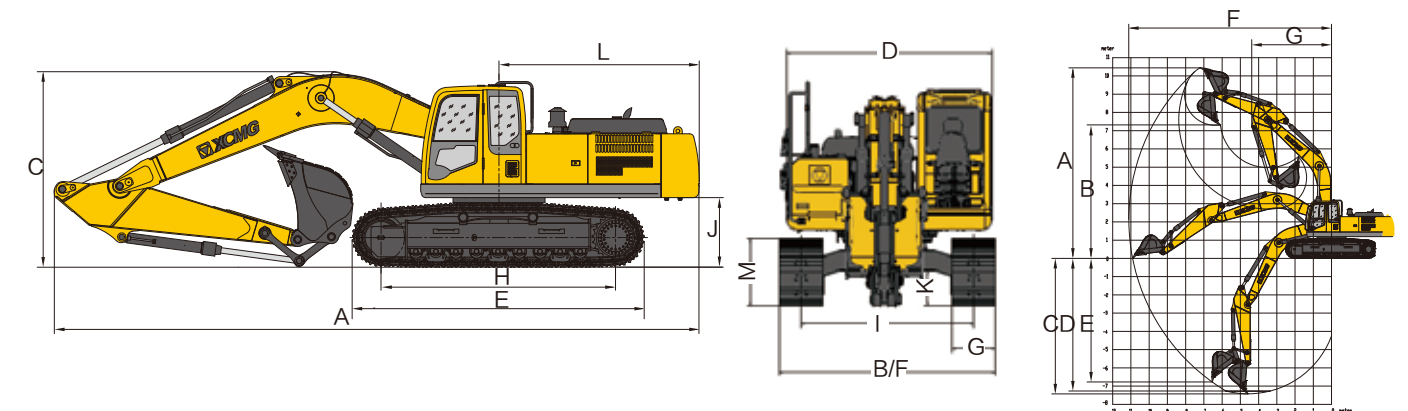
Main Specifications

Item	unit	Main specifications
Model	/	XE400DK
Operating Weight	Kg	39400
Bucket Capacity	m³	2.1
Engine	Model	QSL9
	Electronic Injection	√
	Four strokes	√
	Water cooling	√
	Turbocharging	√
	Air-to-air intercooler	√
	No.of cylinders	6
	Rated power	kw/rpm 222/2100
	Maximum torque/speed	N.m/rpm 1424/1200~1600
	Displacement	L 8.9
Main Performance	Travel speed	km/h 5.6/3.3
	Swing speed	r/min 9.6
	Gradeability	° ≤35
	Ground pressure	kPa 68
	Bucket digging force	kN 310
	Arm digging force	kN 227
	Maximum tractive force	kN 330

	Item	Unit	Parameters
Hydraulic System	Main Pump	/	/
	Rated Flow of Main Pump	L/min	2×370
	Main Safety Valve Pressure	MPa	34.3/37.3
	Travel System Pressure	MPa	34.3
	Swing System Pressure	MPa	26.5
Oil Capacity	Pilot System Pressure	MPa	3.9
	Fuel tank capacity	L	660
	Hydraulic tank capacity	L	350
	Engine oil capacity	L	30
Standard	Length of boom	mm	6200
	Length of arm	mm	2670
	Bucket capacity	m³	2
Optional	Length of boom	mm	-
	Length of arm	mm	-
	Bucket capacity	m³	"1.4/1.5/1.6Rock bucket"

Dimensions

	Item	Unit	Parameters
Apperance size	A Overall length	mm	11300
	B Overall width	mm	3340
	C Overall height	mm	3760
	D Width of platform	mm	3200
	E Track length	mm	5290
	F Total Width of Chassis	mm	3340
	G Track shoe width	mm	600
	H Length to Center of Rollers	mm	4255
	I Track Gauge	mm	2740
	J Counterweight Clearance	mm	1272
	K Minimum ground clearance	mm	550
	L Minimum tail swing radius	mm	3700
	M Track height	mm	1146



Working Range

	Item	Unit	Parameters
Working scope	A Max. digging height	mm	9946
	B Max. dumping height	mm	6890
	C Max. digging depth	mm	6660
	D Maximum depth cut for 2240mm(8 ft) level bottom	mm	6665
	E Max. vertical wall digging depth	mm	4725
	F Max. digging radius	mm	10385
	G Min. swing radius	mm	4445

Lifting Capacity

Lifting point height (m)	Rated lift capacity – Straight ahead (back) (kg)					Rated lift capacity – over-side (kg)				
	Lifting point radius (m)				Lifting capacity at maximum radius	Lifting point radius (m)				Lifting capacity at maximum radius
	3	4.5	6	7.5		3	4.5	6	7.5	
7.5			9475*		9475*	9474*				
6			10931*	7068*	4500*			10535	7068*	4500*
4.5		15503*	12355*	10105*	4026*		15452	10026	7162	6012*
3	13497*	19354*	9444*	11734*	4088*		14129	9444	6880	4088*
1.5		13497*	15620*	10897*	4137*		13325	8972	6626	4137*
Ground		17047*	15962	11371	4694*		13066	8708	6467	4694*
-1.5	29144*	21467*	15835*	11351	5946*	26382	21467*	8648	6450	5946*
-3	22570*	19359*	14713*		9126*	22570*	13314	8793		7301
-4.5	19607*	27369			11933*	19607*	13835			10514

Capacities marked with an asterisk(*) are limited by hydraulic capacities.