



SOLID TO SUCCEED

XC958

WHEEL LOADER



CAMC VIAL
DIRECCION: RUTA 40, CALLE 7 - SAN JUAN, ARGENTINA
TEL: +54 - 2644998650
EMAIL: info@camcvial.com.ar
SITE: <http://www.camcvial.com.ar>

2023-03

1. Scan the QR code to follow "XCMG Loading Machinery"
2. Click the "Loader King" in the lower left corner to obtain more product details after registration



Description & Features

- ▼ As a new generation of special lifting product launched by XCMG Construction Machinery Co., Ltd., XC958 is an innovative wheel loader developed and designed based on extensive market and technical research. It features not only high performance and streamlined appearance, but also greatly-improved reliability, safety, comfort and maintainability compared with the previous generation products.
- ▼ XC958 wheel loader integrated with a platform is suitable for all kinds of operating conditions, and can be optionally configured with triple hydraulic system, XCMG wet axle, oil bath, reversing camera, centralized lubrication, operating linkage for high dumping and super-high dumping, 2.5-5.0 m³ series buckets, tongs, grass clamp, fog-mouth clamp, spreader, snow shovel and quick tools, etc.
- ▼ With high adaptability to various operating conditions, XC958 wheel loader is mainly used for excavation and loading or short-distance transfer of materials in sand and gravel quarries, coal yards, agriculture and animal husbandry, ports, wharves, etc., as well as stripping of surface soil, and cleaning of construction and domestic waste.

Description & Features



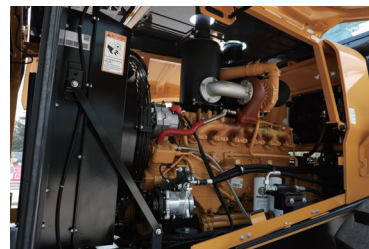
- ▼ WEICHAO China 2 turbocharged engine, integrated with three-stage desert air filter suitable for dusty conditions, and mechanical pump with simple structure to ensure high reliability and excellent power performance.
- ▼ Planetary power-shift transmission connected with a large-capacity torque converter, designed with multiple gears (2 forward and 1 reverse) to meet the speed requirements under different operating conditions; reinforced drive axle specially designed for construction machinery to ensure stable quality, reliable performance and easy maintenance.
- ▼ Integrated with sophisticated and reliable single-pump shunt and load-sensing full hydraulic steering technology, improving the lifting capacity by increasing the pressure of the operating system up to 20.5MPa, and reducing the total cycle time through the design of high pressure and small displacement. Integrated distribution valve with manually-operated actuator, improving the system efficiency, and reducing energy and fuel consumption.
- ▼ Innovative micro-pressurized cab designed with large space, wide field of view and excellent sealing in order to provide a spacious, bright and well-closed room with fully-covered aesthetic interior for the operator working in the cab; lower noise level around the operator's ears due to sound-proof structure of the cab and hood, creating comfortable and quiet environment for the operator; large-arc hyperboloid glass featuring a wider view of field and minimized blind areas around the machine, enabling the operator to easily observe the rear of the machine and the edges of the bucket, and improve the productivity due to comfortable driving and operating experience.
- ▼ Inspection and maintenance of the machine to be carried out simply on the ground or platform, providing sufficient maintenance areas which are always accessible through three points to ensure the safety and convenience of maintenance and routine inspection activities. All maintenance points for oil level inspection, fuel, oil and grease filling, etc., are easily accessible, and the maintenance and replacement of air filter elements and electrical equipment can be carried out conveniently.

Main features



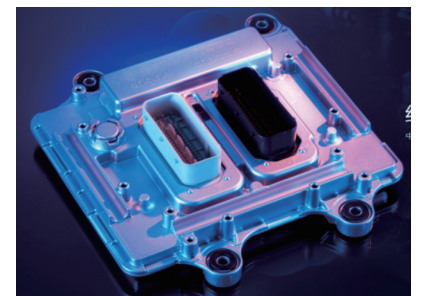
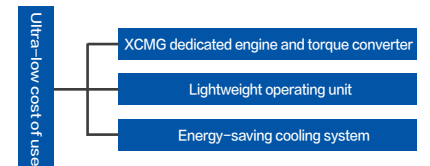
Advanced:

- High-torque supercharged engine combining advanced technology and excellent performance due to optimal power matching based on a power curve developed by XCMG, and meeting the requirements of China II emission standard.
- Specially developed and designed for transportation construction, municipal sanitation, sand and gravel quarries and other applications, and optimizing structural components by using the advanced finite element analysis (FEA) technology to reduce stress and improve performance.
- Integrated with optimally-matched hydraulic system to ensure outstanding performance in various operations; pipelines designed with dual sealing, i.e., 24° cones and O-rings, ensuring excellent performance which meets DIN standards.



Energy-saving:

- Configured with turbocharged engine as standard, which is mechanically controlled like conventional products and less sensitive to diesel quality, enabling wider selection of oil products and improving the cost effectiveness.
- Optimized center layout of the machine to minimize the weight of the machine with increased tilting load and maximize the fuel efficiency.
- Perfect match between high-torque engine and high-pressure & small-displacement hydraulic system to ensure outstanding performance and less fuel consumption during operation.



Reliable:

- Configured with the largest fixed shaft transmission in the market and drivetrain system matched with XCMG heavy-duty drive axles as standard, featuring proven and mature technology to ensure reliable load capacity.
- Structural components optimized by using the finite element analysis (FEA) technology to reduce stress concentration, eliminate local weakness, and greatly improve reliability; adopting the robot-based welding technology to ensure uniform welds with a large depth and excellent fatigue resistance.
- Electrical and brake components properly arranged to in consideration of protection from sunshine, rain, pollution and other environmental factors, so as to improve the reliability of components.
- Drive shaft designed according to international standards, and fixing bolts with a larger-diameter distribution circle, ensuring excellent torsion resistance and adaptability to high-intensity, continuous and heavy-duty operations.
- All covering parts including the hood and cab made of high-quality steel profiled frame, which features high rigidity, light weight and excellent durability; hood skins fabricated by using the integral shaping technology in order to adapt to various bumpy operating conditions.



High efficiency:

- Three-element torque converter with high efficiency to maximize the utilization rate of engine power; large-displacement single-pump split-flow hydraulic system featuring large cylinder power and fast arm lifting to improve the loading speed and efficiency.
- A variety of bucket capacities designed according to different material densities, and buckets with optimized shape enabling easy insertion into material piles and higher fillability; combined with operating linkages designed for different dumping heights to ensure high-efficiency operation in various applications.
- Configured with fixed shaft transmission with 4 forward gears and 2 reverse gears, ensuring reasonable speed distribution and high-efficiency operation whether it is heavy-duty excavation and loading or transfer to the site under no-load condition.



Main features

Common special tools



Comfortable:

- Luxury car-like cab equipped with high-performance aviation seat and large space to ensure safe and comfortable riding experience.
- All operating elements and buttons arranged within easy reach to enable convenient performance of various operations; fully-covered aesthetic interior creating the best operating environment in the cab.
- Full-viewing rear glass and high-mounted rear lights, to ensuring wide view of field and safe reversing.
- Configured with aesthetic and easy-to-operate LCD instrument as standard; the whole series equipped with high-power heating and cooling air conditioner as standard, suitable for all kinds of severe cold and hot conditions.



Convenient:

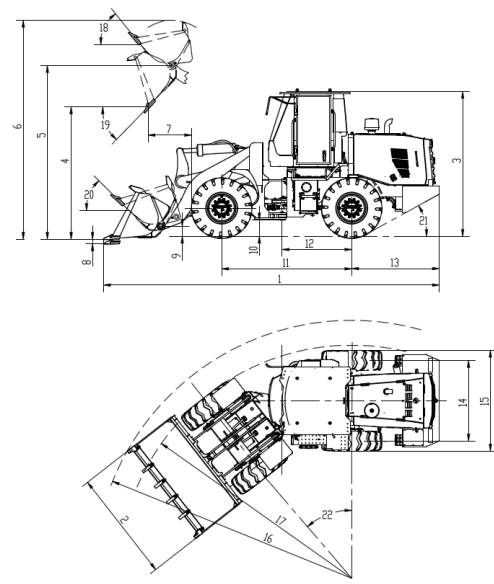
- Engine hood designed with frame structure and large flip-up side door with large opening angle, enabling easy inspection and maintenance of engine and radiator.
- Easy maintenance ensured due to centralized fuse box and centralized display of electrical system operating status.
- Hydraulic oil reservoir designed with independent-cavity oil return circuit to ensure easy maintenance.
- Optimized arrangement of all maintenance units, filling and discharge ports within easy reach to ensure simple operation.



Tool name	Parameter (mm)	Tool structure	Function and operation conditions
Split pairing clamp	Opening:1590 Holding circle:1090 Width:2200		Function: Loading, unloading and transportation of wood, boards and other materials. Main applications: Ports, docks, timber processing, forest farms, etc.
Integral pairing clamp	Opening: 2740 Holding circle:1344 Width:2500		Function: Loading, unloading and transportation of plates, wood blocks, sticks, branches and other materials. Main applications: Wood processing plants, forest farms, card-board factories, biological power plants, etc.
Clamp (staggered)	Opening: 1550 Holding circle:100 Width:2350		Function: Loading, unloading and transportation of wood, boards and other materials. Main applications: Ports, docks, timber processing, forest farms, etc.
Pipe clamp	Opening:1660 Holding diameter: 130/840 Width:2500		Function: Loading, unloading and transportation of pipes, plates and other materials. Support multiple functions such as pairing clamp, staggered clamp and forks. Main applications: Oil fields, wood processing plants, etc.
Frog-mouth clamp	Opening:1880 Holding circle:980 Width:1780		Function: Loading, unloading and transportation of wood, boards and other materials. Main applications: Ports, docks, timber processing, forest farms, etc.
Grass clamp	Opening:2900 Holding circle:1470 Width:2580		Function: Loading, unloading and transportation of plates, wood blocks, sticks, branches and other materials. Main applications: Docks, timber processing, forest farms, paper mills, biomass power plants, etc.
Quick clamp	Opening:1780 Holding circle:430 Width:2380		Function: Loading, unloading and transportation of wood, boards and other materials. Main applications: Ports, docks, timber processing, forest farms, etc.

Main Specifications

Dimensions



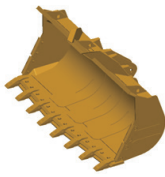
Specifications

Parameter	Parameter	Unit
Rated load kg	5500	kg
Rated bucket capacity m³	3.2	m³
Rated power kW	162	kW
Working mass kg	16950±300	kg
Max tractive force kN	160±5	kN
Max breakout force kN	180±5	kN
Wheel base mm	3350	mm
Wheel track mm	2250	mm
Dumping height mm	3070	mm
Dumping range mm	1240	mm
Boom lifting time s	5	s
Total s	10	s
Max gradeability °	28	°
Steering angle °	40	°
Speed at Gear 1 (forward/reverse) km/h	13/17	km/h
Speed at Gear 2 (forward/reverse) km/h	40	km/h
Overall dimensions (L × W × H) mm	8380×2996×3455	mm

- The technology of XCMG backhoe loaders is subject to constant improvement and upgrading. In case the specifications or detailed appearance contained in this brochure differ from actual products, the latter shall prevail;
- XCMG reserves the right of final interpretation for the above. Our products may be modified without prior notice to users.

Parameter	XC958 standard arm 3.2 m³	XC958 small-height dumping 3.0 m³	XC958 Russia (small-height dumping) 3.2 m³
Overall length mm	8380	8580	8610
Overall width mm	2996	2996	2996
Overall height mm	3455	3455	3455
Dumping height mm	3070	3380	3360
Pivot height mm	4150	4450	4450
Maximum lift height mm	5665	5900	5965
Dumping range mm	1240	1150	1170
Digging depth mm	90	80	80
Transport pin height mm	560	560	560
Min ground clearance mm	425	425	425
Wheel base mm	3350	3350	3350
From the center of rear axle mm	1675	1675	1675
Rear overhang length mm	2140	2140	2140
Wheelbase mm	2250	2250	2250
Mainframe width mm	2850	2850	2850
Turning radius (outside of tool) mm	6750	6820	6825
Turning radius (outside of tyre) mm	6045	6045	6045
Rollback angle during lifting °	57	57	57
Dumping angle °	45	45	45
Dumping angle at transport position °	47	47	47
Departure angle °	28	28	28
Vehicle steering angle °	40	40	40

System category	Specification	XC958
Engine	Brand and model	WEICHAI WD10G220E21
	Type	Inline, six-cylinder, water-cooled, turbocharged
	Displacement	9.726
	Emission standard	China II
Gearbox	Type	Planetary transmission
	Gears	2 forward 1 reverse
Drive axle	Brand and form	XCMG dry drive axle
Tyre	Standard specifications	Front wheel: 23.5-25-18PR; rear wheel: 23.5-25-16PR
Working hydraulic system	Type	Dual-transmission confluence quantitative hydraulic system
	Operation mode	Pilot control
Steering hydraulic system	Type	Full hydraulic steering system
Brake System	Service brake	Air over hydraulic, four-wheel caliper disc brake
	Parking brake	Pneumatically-controlled internal expanding shoe brake
Air conditioner		Cooling and heating
Fuel/oil filling (for reference)	Diesel L	300
	Engine oil L	20
	Antifreeze L	45
	Drive axle oil L	2×27
	Hydraulic fuel L	150
	Brake fluid L	3



XCMG approved attachments



Genuine parts



Financial solutions



Maintenance contract



Telematics

Professional Integrated Complete Solutions

XCMG has built a strong reputation based on the quality, reliability and durability of its construction machinery. What's more, XCMG has gradually established a service network to constantly provide its local integrated and highly efficient complete solutions for all customers.

Full Range of Services Ready for you

In order to respond to your needs as fast as possible, XCMG's experts are on their way to your job site from one of our facilities near you. Full range of services are available in order to reduce your total cost of ownership and increase your revenue.



XCMG Global Spare Parts System

