

SOLID TO SUCCEED

XC948

WHEEL LOADER



CAMC VIAL

DIRECCION: RUTA 40, CALLE 7 - SAN JUAN, ARGENTINA

TEL: +54 - 2644998650

EMAIL: info@camcvial.com.ar

SITE: <http://www.camcvial.com.ar>

2023-03

1. Scan the QR code to follow "XCMG Loading Machinery"
2. Click the "Loader King" in the lower left corner to obtain more product details after registration.



Description & Features

- ▼ As a new generation of special lifting product launched by XCMG Construction Machinery Co., Ltd., XC948 is an innovative wheel loader developed and designed based on extensive market and technical research. It features not only high performance and streamlined appearance, but also greatly-improved reliability, safety, comfort and maintainability compared with the previous generation products.
- ▼ XC948 is a platform-based wheel loader suitable for all kinds of operating conditions, and can be optionally configured with reversing camera, fork and 2.4m³ blade bucket.
- ▼ With high adaptability to various operating conditions, XC948 wheel loader is mainly used for excavation and loading or short-distance transfer of materials in sand and gravel quarries, coal yards, agriculture and animal husbandry, ports, wharves, etc., as well as stripping of surface soil, and cleaning of construction and domestic waste.
- ▼ WEICHAO China 2 turbocharged engine, integrated with three-stage desert air filter suitable for dusty conditions, and mechanical pump with simple structure to ensure high reliability and excellent power performance.

Description & Features



- ▼ Planetary power-shift transmission connected with a large-capacity torque converter, designed with multiple gears (2 forward and 1 reverse) to meet the speed requirements under different operating conditions; reinforced drive axle specially designed for construction machinery to ensure stable quality, reliable performance and easy maintenance.
- ▼ Integrated with sophisticated and reliable single-pump shunt and load-sensing full hydraulic steering technology, improving the lifting capacity by increasing the pressure of the operating system up to 20.5MPa, and reducing the total cycle time through the design of high pressure and small displacement. Integrated distribution valve with manually-operated actuator, improving the system efficiency, and reducing energy and fuel consumption;
- ▼ Innovative micro-pressurized cab designed with large space, wide field of view and excellent sealing in order to provide a spacious, bright and well-closed room with fully-covered aesthetic interior for the operator working in the cab; lower noise level around the operator's ears due to sound-proof structure of the cab and hood, creating comfortable and quiet environment for the operator; large-arc hyperboloid glass featuring a wider view of field and minimized blind areas around the machine, enabling the operator to easily observe the rear of the machine and the edges of the bucket, and improve the productivity due to comfortable driving and operating experience.
- ▼ Inspection and maintenance of the machine to be carried out simply on the ground or platform, providing sufficient maintenance areas which are always accessible through three points to ensure the safety and convenience of maintenance and routine inspection activities. All maintenance points for oil level inspection, fuel, oil and grease filling, etc., are easily accessible, and the maintenance and replacement of air filter elements and electrical equipment can be carried out conveniently.



Advanced:

- High-torque supercharged engine combining advanced technology and excellent performance due to optimal power matching based on a power curve developed by XCMG, and meeting the requirements of China II emission standard.
- Specially developed and designed for transportation construction, municipal sanitation, sand and gravel quarries and other applications, and optimizing structural components by using the advanced finite element analysis (FEA) technology to reduce stress and improve performance.
- Integrated with optimally-matched hydraulic system to ensure outstanding performance in various operations; pipelines designed with dual sealing, i.e., 24° cones and O-rings, ensuring excellent performance which meets DIN standards.

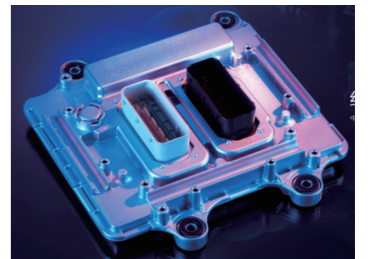
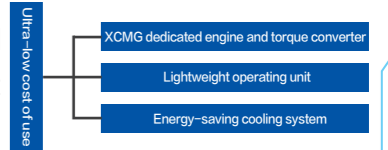


Main features



Energy-saving:

- Configured with turbocharged engine as standard, which is mechanically controlled like conventional products and less sensitive to diesel quality, enabling wider selection of oil products and improving the cost effectiveness.
- Optimized center layout of the machine to minimize the weight of the machine with increased tilting load and maximize the fuel efficiency.
- Perfect match between high-torque engine and high-pressure & small-displacement hydraulic system to ensure outstanding performance and less fuel consumption during operation.



Reliable:

- Configured with the largest fixed shaft transmission in the market and drivetrain system matched with XCMG heavy-duty drive axles as standard, featuring proven and mature technology to ensure reliable load capacity.
- Structural components optimized by using the finite element analysis (FEA) technology to reduce stress concentration, eliminate local weakness, and greatly improve reliability; adopting the robot-based welding technology to ensure uniform welds with a large depth and excellent fatigue resistance.
- Electrical and brake components properly arranged to in consideration of protection from sunshine, rain, pollution and other environmental factors, so as to improve the reliability of components.
- Drive shaft designed according to international standards, and fixing bolts with a larger-diameter distribution circle, ensuring excellent torsion resistance and adaptability to high-intensity, continuous and heavy-duty operations.
- All covering parts including the hood and cab made of high-quality steel profiled frame, which features high rigidity, light weight and excellent durability; hood skins fabricated by using the integral shaping technology in order to adapt to various bumpy operating conditions.



High efficiency:

- Three-element torque converter with high efficiency to maximize the utilization rate of engine power; large-displacement single-pump split-flow hydraulic system featuring large cylinder power and fast arm lifting to improve the loading speed and efficiency.
- A variety of bucket capacities designed according to different material densities, and buckets with optimized shape enabling easy insertion into material piles and higher fillability; combined with operating linkages designed for different dumping heights to ensure high-efficiency operation in various applications.



Comfortable:



- Luxury car-like cab equipped with high-performance aviation seat and large space to ensure safe and comfortable riding experience.
- All operating elements and buttons arranged within easy reach to enable convenient performance of various operations; fully-covered aesthetic interior creating the best operating environment in the cab.
- Full-viewing rear glass and high-mounted rear lights, to ensuring wide view of field and safe reversing.
- Configured with aesthetic and easy-to-operate LCD instrument as standard; the whole series equipped with high-power heating and cooling air conditioner as standard, suitable for all kinds of severe cold and hot conditions.



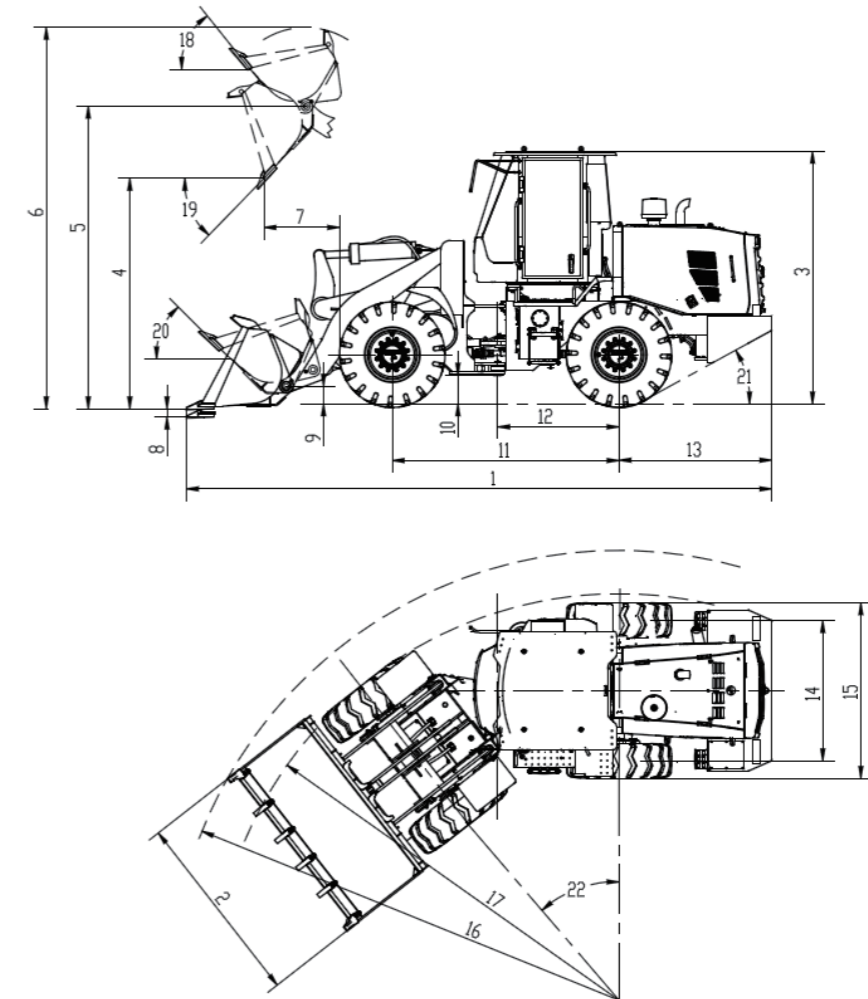
Convenient:



- Engine hood designed with frame structure and large flip-up side door with large opening angle, enabling easy inspection and maintenance of engine and radiator.
- Easy maintenance ensured due to centralized fuse box and centralized display of electrical system operating status.
- Hydraulic oil reservoir designed with independent-cavity oil return circuit to ensure easy maintenance.
- Optimized arrangement of all maintenance units, filling and discharge ports within easy reach to ensure simple operation.



Dimensions



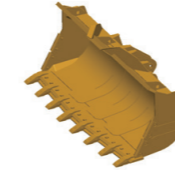
Dimensions

Parameter	XC948 (China II) 2.4 m ³	Parameter	XC948 (China II) 2.4 m ³
1 Overall length mm	7890	12 From the center of rear axle mm	1550
2 Overall width mm	2712	13 Rear overhang length mm	2000
3 Overall height mm	3300	14 Wheelbase mm	1980
4 Dumping height mm	3050	15 Mainframe width mm	2500
5 Pivot height mm	4111	16 Turning radius (outside of tool) mm	6340
6 Maximum lift height mm	5345	17 Turning radius (outside of tyre) mm	6190
7 Dumping range mm	1045	18 Rollback angle during lifting °	51.3
8 Digging depth mm	78	19 Dumping angle °	45
9 Transport pin height mm	260	20 Dumping angle at transport position °	49
10 Min ground clearance mm	410	21 Departure angle °	28
11 Wheel base mm	3100	22 Vehicle steering angle °	38

Specifications

Parameter	Parameter	
Rated bucket capacity m ³	2.4	
Rated load kg	4500	
Operating weight kg	13200±200	
Dumping height mm	3050 (bucket edge)	
Dumping range mm	1070 (bucket edge)	
Wheel base mm	3100	
Wheel track mm	2060	
Overall length mm	7850	
Main unit width (outside of tyres) mm	2635	
Overall height mm	3300	
Bucket width mm	2718	
Min ground clearance mm	410	
Steering angle °	38	
Departure angle °	28	
Dumping angle at top position °	45	
Rollback angle on ground °	45	
Digging depth mm	80	
Max breakout force kN	140	
Max tractive force kN	140±5	
Min turning radius (center of tyre) mm	5530	
Machine passing radius (outside of bucket) mm	6350	
Boom lifting time S	≤5.2	
Total cycle time S	≤9.0	
Model WP6G175E22		
Engine	Rated power kW	129
	Rated speed r/min	2200
Tyre model 20.5-25-16PR		
Max driving speed km/h	1 forward/reverse gear	12/16
	Forward Gear 2	38

- The technology of XCMG backhoe loaders is subject to constant improvement and upgrading. In case the specifications or detailed appearance contained in this brochure differ from actual products, the latter shall prevail;
- XCMG reserves the right of final interpretation for the above. Our products may be modified without prior notice to users.



XCMG approved attachments



Genuine parts



Financial solutions



Maintenance contract



Telematics

Professional Integrated Complete Solutions

XCMG has built a strong reputation based on the quality, reliability and durability of its construction machinery. What's more, XCMG has gradually established a service network to constantly provide its local integrated and highly efficient complete solutions for all customers.

Full Range of Services Ready for you

In order to respond to your needs as fast as possible, XCMG's experts are on their way to your job site from one of our facilities near you. Full range of services are available in order to reduce your total cost of ownership and increase your revenue.



XCMG Global Spare Parts System

The screenshot displays the XCMG Global Spare Parts System interface. It features a navigation menu on the left with categories like 'QUICK CHANGE MECHANISM', 'TIRE AND WHEEL RIM ASSEMBLY', 'DRIVE AXLE SYSTEM', 'TRANSMISSION AND TORQUE', 'BRAKING SYSTEM', 'UNDERCARRIAGE SYSTEM', 'CENTRALIZED EXHAUSTION', 'REAR MUDGUARD', 'REAR FRAME SYSTEM', 'COUNTERWEIGHT', 'COOLING SYSTEM', 'ENGINE HOOD ASSEMBLY', 'LIFTING SYSTEM', 'ENGINE SYSTEM', 'QUICK FILL SYSTEM', 'CAB SYSTEM', 'CAB INSTALLATION ASSEMBLY', 'AIR CONDITIONING SYSTEM', and 'CAB PRESSURIZATION SYSTEM'. The main content area shows a detailed parts list for a '2030230 CAB SYSTEM' and a '2030240 FRONT AXLE ASSEMBLY'. Each part is listed with its number, material encoding, name, quantity, and a 'Details' link. The interface is clean and professional, with a blue header and a white background.