

D260



D260

Crawler Bulldozer

D260 (export type) bulldozer is bulldozer with hydraulic transmission and electric control shift developed by XCMG for overseas market. This project inherits XCMG's excellent product quality, and its performance is stable and reliable. It is mainly applicable to excavating, backfilling, earthwork pushing and other operations for road, railway, airport, river and other grounds and it is a indispensable construction machinery for construction of national defense projects, urban buildings, water conservancy projects, etc. This equipment adopts intelligent control, limit load, hydraulic pilot control of shovel blade, electric control shift, construction data management and other advanced technologies. It is a construction equipment with advanced technologies, high working efficiencies, convenient and flexible operations and high reliabilities.

Performance and characteristics

- There is a 7-inch touch LCD color display with Chinese display of human-computer interaction interface. The main screen of the display displays the engine parameters, walking status, gear information, fault alarm and other parameters of the whole machine of the engine in real time. The main and secondary pages can be touched for convenient switching, and the status of controller, engine ECU and fault diagnosis can be queried on the secondary page, on which the working hours, average fuel consumption, maintenance, fault status and other information can be conveniently queried.
- It is equipped with Shangchai SC9DF270G3 engine, meeting non-road machinery National-III emission requirements, which is powerful in power, efficient in energy utilization and easy in maintenance; the complete machine adopts variable power control,

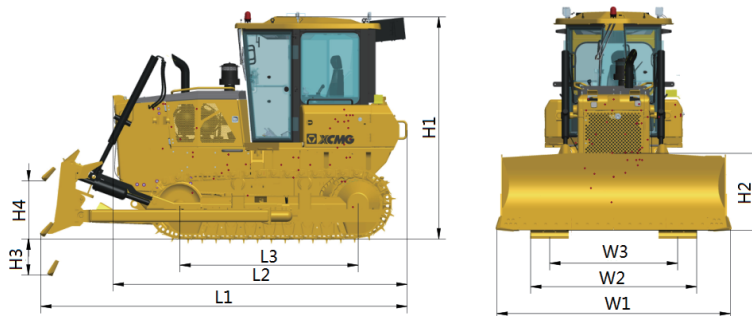
the complete machine is matched with three-power operation mode, which can be switched according to the actual load requirements with saved fuels and controllable power performance. The construction efficiency of the complete machine is greatly improved and the comprehensive fuel consumption is lower, saving the use cost for users.

- Optimized transmission system is equipped with transmission electric control shift, efficient and simple construction and high transmission efficiency;
- The spacious cab has large space and wide vision and is equipped with standard anti-roll cab with high safety;
- Stable and reliable chassis system can adapt to various harsh working conditions.

Main dimensions

Unit: mm

Model	L1	L2	L3	H1	H2	H3	H4	W1	W2	W3
D260	5590	4710	2840	3527	1395	540	1210	3725	2560/2610/2660	2000
D260-LGP	6060	4710	3480	3554	1248	550	1330	4365	3160	2250



Main specifications

Item	Content	Unit	D260	D260 LGP
Machine Performance	Operating weight	Kg	23800	26240
	Minimum turning radius	mm	3200	3800
	Ground pressure	kPa	66	35
	Overall dimensions	mm	5590×3725×3527	6060×4365×3554
Engine	Model		SC9DF270G3	SC9DF270G3
	Rated power/Rated speed	kW/rpm	199;2200	199;2200
Propel	Forward gear 1	km/h	3.8	3.8
	Forward gear 2	km/h	6.8	6.8
	Forward gear 3	km/h	11.3	11.3
	Reverse gear 1	km/h	4.9	4.9
	Reverse gear 2	km/h	8.2	8.2
	Reverse gear 3	km/h	13.6	13.6
	Ground clearance	mm	500	500
Chassis system	Track center distance	mm	2000	2250
	Crawler width	mm	560;610;660	910
	Ground contact length of crawler	mm	2840	3480
	Number of track shoes	mm	39	45
	Chain pitch	mm	216	216
	Number of track rollers(one side)	piece	7	8
	Number of carrier rollers(one side)	piece	2	2
Tank capacities	Fuel tank	L	450	450
	Hydraulic oil tank	L	110	110
Working device	Blade type		Straight blade	Straight blade
	Blade width	mm	3725	4365
	Blade height	mm	1395	1248
	Blade capacity	m³	5.8	5.4
	Blade lifting height above the ground	mm	1210	1330
	Blade depth	mm	540	550
Ripper	Ripper type		Single-tooth;Three-tooth (optional)	—
	Working depth	mm	695;666	—
	Ripper lifting height above the ground	mm	515;555	—